



## DOVER IIC PLUG-IN FOR SOLIDWORKS

### 1. Introduction:

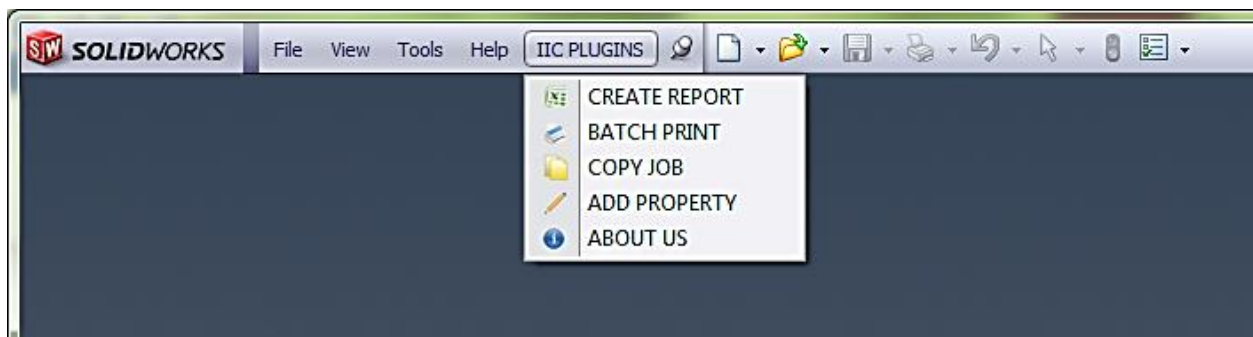
Many companies using mechanical design software are spending a lot of effort and time on repetitive, redundant and trivial tasks. Custom Plug-ins can automate manual process and save valuable time and money.

Process automation or automation engineering aids in achieving the goal of optimizing production processes.

With this intention Dover India Innovation Center has developed utilities for Mechanical Design software SolidWorks using its native APIs. It includes:

- Creation of Excel Reports
- Batch Printing
- Copy Job
- Adding/Updating properties to multiple parts of assemblies.

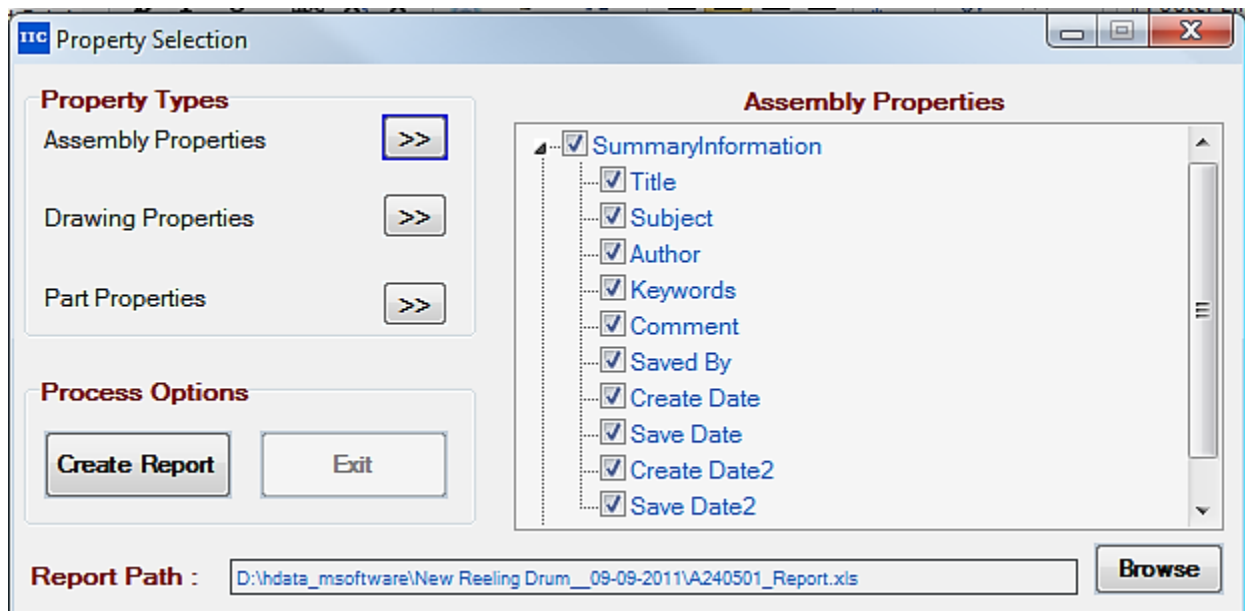
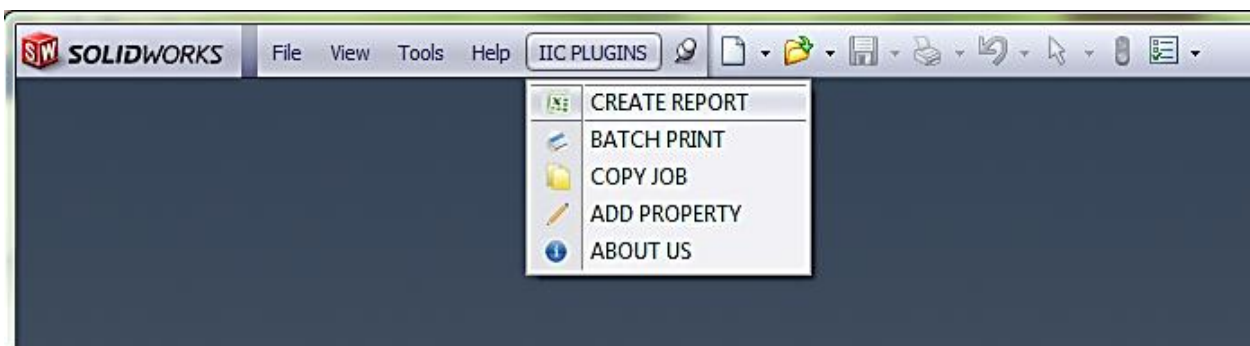
After installing the Dover IIC Plugins Setup you can see the IIC PLUGINS in the menu bar of SolidWorks with five buttons as shown below:



## 2. Report Utility

### 2.1 Objective:

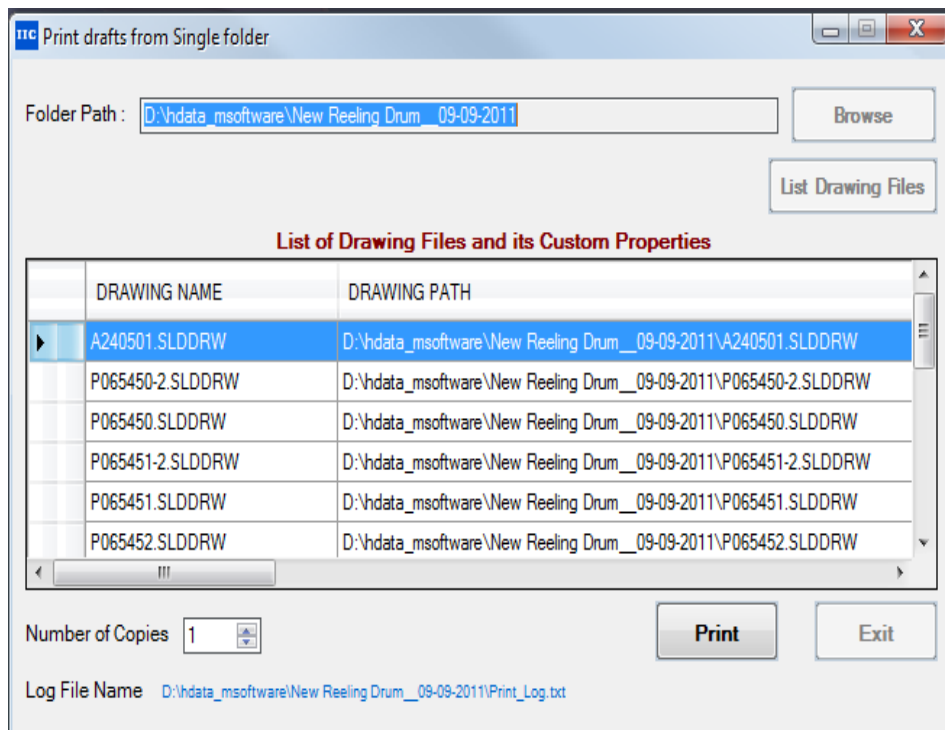
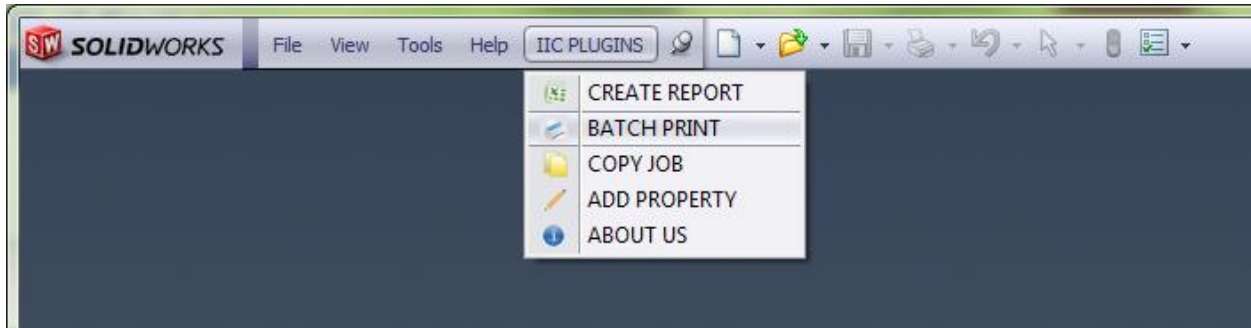
- Creation of the Custom BOM (Bill of Material) Report on an Excel file for End User.
- Export Assembly document information, Drawing document information, Sheet Metal Document information and Part document information to the Excel file.
- Export property set information such as Summary Information, Project Information, Custom, Mechanical Modeling, etc. of each file type of an Assembly to the Excel file based on selection of user.



### 3. Batch Print Utility

#### 3.1 Objective:

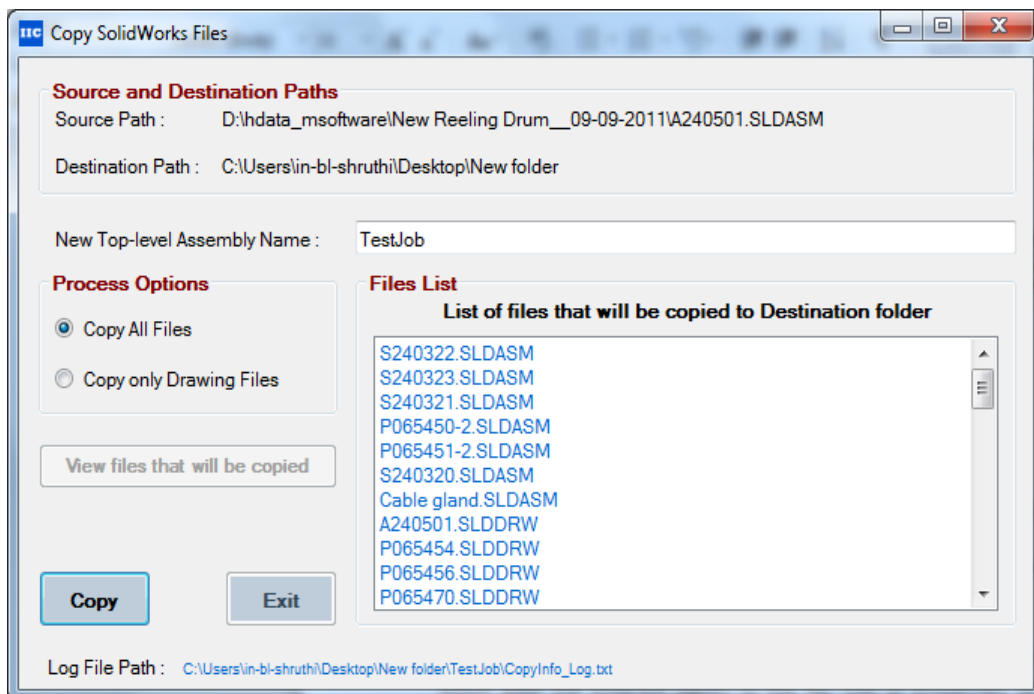
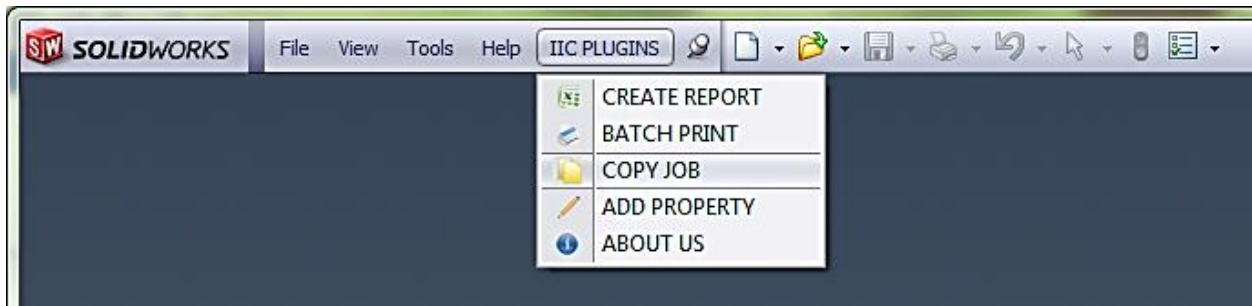
- Print multiple Solid Edge Drawing files of single job at the same time.
- Print multiple Solid Edge Drawing files of multiple jobs at the same time.
- Creating log file which has information on Drawing files printed successfully.



## 4. Copy Job Utility

### 4.1 Objective:

- Make the copy of existing assembly to new location
- Copy only top-level assembly and Drawing files to the new location by retaining all links
- Copy all files linked to top-level assembly and also Drawing files
- copy job performance is optimized using Revision Manager



## 5. Add/Update Property Utility

### 5.1 Objective:

- Add new Custom Property to all file types
- Update existing property set of all file types with new values

